

# G4 Series

G4 & G4c Miniature Solenoid Valves  
1/8" NPT | Cartridge



## Introduction

### 1/8" NPT | CARTRIDGE-MOUNT

2-Way and 3-Way valves available in two compact forms: 1/8" NPT G4, or cartridge-mount G4c

## Features

### LONG LIFE

Proprietary internal corrosion resistance  
Life up to 20 million cycles\*  
Available water-tight solenoid coils\*\*  
Standard 303 stainless steel and FKM

### HIGH PERFORMANCE

Up to 950 psi operating pressure  
Up to 0.38 Cv flow factor  
Fast response times / cycle rates

### COMPACT & EFFICIENT

Miniature footprint, yet high performance  
Excellent direct current (DC) ratings  
Efficient power-to-performance ratio  
Cartridge design minimizes leak paths

\* demonstrated in laboratory conditions

\*\* NEMA 4, 4X; plus thermal shock-resistant technology

+ available in NSF 169 certified configurations; consult factory



2-WAY | 3-WAY | 1/8" NPT | CARTRIDGE

NORMALLY CLOSED | NORMALLY OPEN | UNIVERSAL

UP TO 950 PSI | UP TO 0.38 Cv | NSF 169+

## Benefits

### MORE DESIGN FREEDOM

Develop more compact machines without compromising fluid control performance.

A compact design that doesn't sacrifice performance; G4 and G4c valves deliver industry-leading pressure and flow characteristics and give OEMs more design freedom, even in tight design envelopes.

G4c cartridge valves are easily integrated into OEM equipment, minimizing design complexity, leak paths, and optimizing total cost of ownership.

### TRUSTED SAFETY & RELIABILITY

UL approvals for US and Canada, life up to 20 million cycles\*, available NSF 169 certified models, a corrosion-resistant construction, water-tight solenoid coils, and various specialty configurations help OEMs deliver reliable solutions to market.

### FASTER PRODUCT DEVELOPMENT

Agency approvals, flexible electrical options, modular design scheme, and Parker's vast global network facilitate expedited development and approval cycles for OEMs. G4 Series is designed and assembled in USA and available globally.



ENGINEERING YOUR SUCCESS.

# Small, but Mighty

Economical G4 and G4c valves deliver durability and reliability in a compact, easy-to-integrate package

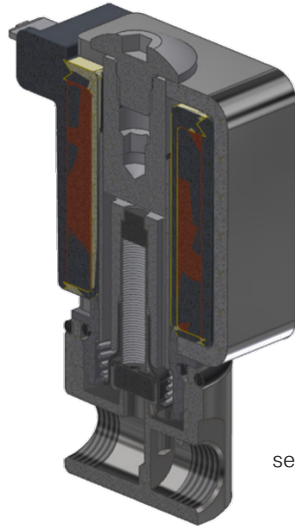
Diverse electrical connection and voltage options

No special tools required for maintenance

Short valve stroke for fast response time

Proprietary anti-corrosion flange design for media compatibility and life

NPT or cartridge standard; other options available for OEM needs



Water-tight\*\* solenoid coil options with integrated gland seals for moisture/thermal shock resistance

Laser-welded sleeve assembly for tight control of flow and consistent performance valve-to-valve, and over life cycle of valve

Standard FKM or NSF+ EPDM seals; diverse specialty seals available

Floating plunger seal design for self-adjusting, bubble-tight shutoff; up to 20 million cycles\*\*

CFD-optimized body footprint designed for optimal flow rates

Standard 303 SS body

Range	
Port Size	1/8"   Cartridge
Flow	Up to 0.38 Cv
Pressure	Up to 950 psi
Media Temp.	Up to 240 °F
Ambient Temp.	Up to 135 °F



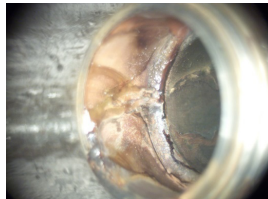
\* demonstrated in laboratory conditions  
 \*\* NEMA 4,4X; plus thermal shock-resistant technology  
 + available in NSF 169 certified configurations; consult factory

## Proprietary Corrosion-Resistant Design

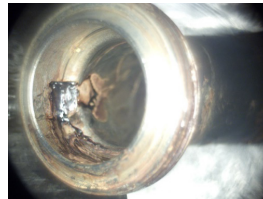
Enhanced internal corrosion resistance leads to better, cleaner, higher-performing OEM equipment.



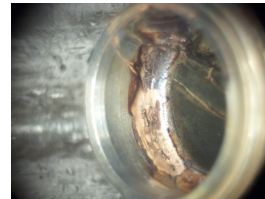
Parker G4 Series



Other Valve A



Other Valve B



Other Valve C

| 720 hours salt spray - ASTM B117 |

## Find Your Solution



Configure, CAD, Manuals



Series Catalog



Competitor Cross Reference



Locate a Distributor

